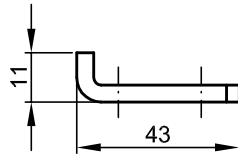
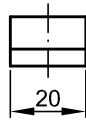


**Stalpol**

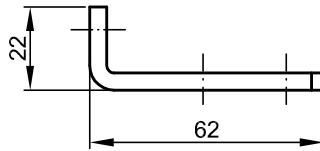
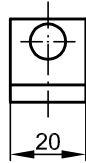


**Kątownik 11x43  
Nr 641.005**

*Powłoka:*  
- Cynkowany

tel. 52/346-41-76; fax. 52/372-62-05; [www.slawpol.bydgoszcz.pl](http://www.slawpol.bydgoszcz.pl); [slawpol@op.pl](mailto:slawpol@op.pl);

**Stalpol**

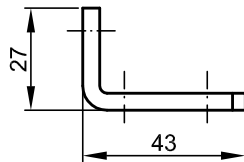
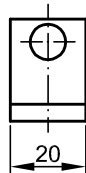


**Kątownik 22x62  
Nr 641.006**

*Powłoka:*  
- Cynkowany

tel. 52/346-41-76; fax. 52/372-62-05; [www.slawpol.bydgoszcz.pl](http://www.slawpol.bydgoszcz.pl); [slawpol@op.pl](mailto:slawpol@op.pl);

**Stalpol**

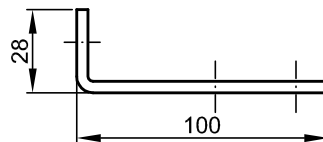
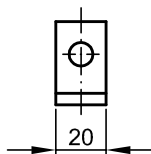


**Kątownik 27x43  
Nr 641.007**

*Powłoka:*  
- Cynkowany

tel. 52/346-41-76; fax. 52/372-62-05; [www.slawpol.bydgoszcz.pl](http://www.slawpol.bydgoszcz.pl); [slawpol@op.pl](mailto:slawpol@op.pl);

**Stalpol**



**Kątownik 28x100  
Nr 641.008**

*Powłoka:*  
- Cynkowany

tel. 52/346-41-76; fax. 52/372-62-05; [www.slawpol.bydgoszcz.pl](http://www.slawpol.bydgoszcz.pl); [slawpol@op.pl](mailto:slawpol@op.pl);